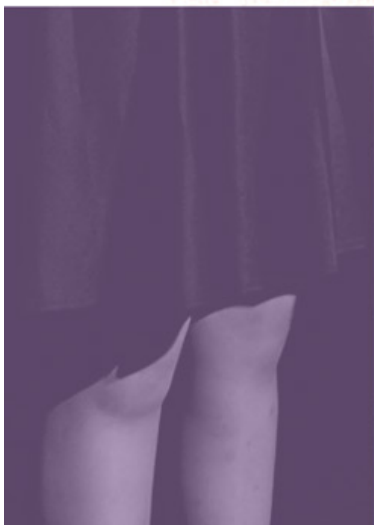


EASTERN SCHOOL OF PERFORMING ARTS

2019/20 PROSPECTUS





Eastern School of Performing Arts is a provision offering Level 3, 4 & 5 programmes to Post 16 students across the region. ESPA differ from other colleges, striving to not only ensure students gain a qualification, but also develop as well rounded individuals and performers. Our students go on to train and study in varying disciplines, be this at theatre school, university or into employment.

The courses at ESPA are highly disciplined - with excellence as its goal - we expect complete commitment and dedication to the training. In return we will offer support and guidance as well as professional, quality teaching to ensure everyone reaches their potential. The courses have been developed to reflect the needs and interests of those who wish to pursue a career in the performing arts, specifically in Musical Theatre and Dance.

ESPA aim to work with these students to give them confidence to reach their potential and achieve their goals and ambitions.

At ESPA, everyone is an Individual.

STUDY ON A VOCATIONAL COURSE WHICH IS EQUIVALENT TO 3 A LEVELS (LEVEL 3)  
DEVISE YOUR OWN TRAINING PROGRAMME (FOUNDATION YEAR TRAINING AND HND)  
INDUSTRY PROFESSIONAL TUTORS  
HIGH QUALITY PRACTICAL TRAINING  
PERFORMANCE EXPERIENCE  
PRIVATE THEATRE SCHOOL ENVIRONMENT  
CONFIDENCE  
FULLY FUNDED FOR 16-18 YEAR OLDS  
STUDENT FINANCE APPLICABLE FOR HIGHER EDUCATION PROGRAMMES

LIKE MINDED PEOPLE  
NO WRITTEN EXAMS  
GUEST MASTERCLASSES AND WORKSHOPS  
ADDITIONAL CLASSES AND OPPORTUNITIES  
VARIETY OF FUTURE TRAINING OPTIONS  
INDUSTRY RELEVANT CLASSES AND ASSIGNMENTS  
INSPIRING AND AMBITIOUS TUTORS  
PERFORMANCE EXPERIENCE

WHY STUDY AT



EASTERN SCHOOL OF PERFORMING ARTS

# FACILITIES

Situated in the historic market town of Stamford, Eastern School of Performing Arts is surrounded by charm and character. Stamford is 100 miles north of London and is one of the finest stone towns in England. Its central location and excellent road and rail links make visits to the theatre in other cities easy,

Eastern School of Performing Arts is in the very centre of Stamford Town, with a wide selection of shops, a multi-purpose Arts Centre, cinema, gallery, nightclubs and numerous traditional pubs and places to eat right on the doorstep.



CASTLE HOUSE offers students a unique, creative and friendly learning environment.

- Two dance studios, equipped with ballet barres and mirrors.
- Dedicated singing and acting studios equipped with digital piano.
- Two classrooms for theoretical classes and independent study.
- A dedicated common room for each Level 3 and Higher Education students.
- A kitchen area with kettles, microwaves and fridges for lunch breaks.
- IT provision and laptops for use onsite.

Alongside the facilities onsite at Eastern School of Performing Arts, students can also access facilities at New College Stamford which include a fully stocked library and study areas. Eastern School of Performing Arts have good contacts locally, and students utilise Stamford Corn Exchange theatre, Stamford Arts Centre, The Key Theatre Peterborough, The Undercroft for external performances.

# STAFF

Eastern School of Performing Arts prides itself on the extensive experience of staff delivering on its courses. Tutors come from a variety of backgrounds including West End, Cruise Ships, TV/Film, Music Videos, Writing, Directing, Composing and Education. This variety of backgrounds enables us to ensure that all classes have subject specialists, giving ESPA students a rounded training in the performing arts.

Throughout the year, guest workshops from current industry professionals enables students to explore the working world from a variety of different areas. Previous workshops for ESPA students include: Arts Educational Schools, Royal Central School of Speech and Drama, John Barr ( Sweeney Todd, Les Miserables, Cats, Evita, Ragtime) Graeme Pickering (casting director/teacher/choreographer), Etisyai Philip (Book of Mormon - West End, Avenue Q - UK Tour & Hong Kong) Marvyn Charles ( Everybody's Talking About Jamie - West End, Thriller - West End) Jason Gray (Thriller - West End, Starlight Express - Bochum) Daniel Taylor (West End and National Tour), Rosie Heath (Beautiful - West End, Mamma Mia - West End), Craig Mather (Wind in The Willows - West End, Les Miserables - West End), Tracey Penn (Love Never Dies - West End, Legally Blonde), Tom Shilcock (CYD?) Francis Foreman (Chicago - West End, Cabaret - UK Tour).

## LEVEL 3 PROGRAMMES



# LEVEL 3 EXTENDED DIPLOMA IN MUSICAL THEATRE

The Level 3 Extended Diploma in Musical Theatre is a two-year programme consisting of sixteen units which allows you to progress onto a Degree level course, audition for theatre schools or to provide you with skills to find employment. It provides students with the opportunity to explore, develop and test their creativity within a qualification structure which is stimulating, demanding and provides a supportive transition

from general to more specialised study.

The course focuses on the vocational demands of Musical Theatre - giving every student an excellent grounding in Singing, Dancing and Acting, alongside developing individuality and performance skills.

ESPA provide a supportive environment that fosters not only the artistic development but also intellectual and personal development within all its students. The training is based around practical sessions and performance experience, where the three skills are brought together. Students will also study the historical, stylistic and professional aspects of the industry.

You will be assessed in core areas such as Ballet, Jazz, Singing and Acting throughout the year, along with completing projects based around devising, musical theatre repertoire and voice. You will perform in the full school showcase during the first year along with experiencing industry workshops from guest tutors.

As part of the programme at ESPA, all students are required to take an extra qualification alongside their Extended Diploma. Rather than taking a generic qualification, we feel it is more relevant for students to take an examination which will assist them in their chosen field.

The London Academy of Dramatic Art (LAMDA) offers qualifications which are OFQUAL registered, provide you with UCAS points from Grade 6 and above and enable you to take musical theatre examinations as your extra qualification. LAMDA classes are timetabled into the programme of study, sessions will not only work on integral technique and vocal repertoire, but will enable students to follow a set syllabus of work as outlined by LAMDA. During your first term at ESPA, examination grades will be determined and students will work on this throughout the year, taking examinations in the second or third term.

A second examination will be taken during the second year.

In the second year of the programme, students will continue developing core skills, preparing for auditions at drama school/university along with again performing in the full school showcase. The final term at ESPA is preparation for the full scale musical, working as a company students put the skills learnt and developed into practice, developing crucial rehearsal skills and performing in a professional venue.

'BEFORE STARTING AT ESPA, I THOUGHT I WAS A DANCER, BUT THANKS TO THE DIVERSITY OF THE MUSICAL THEATRE COURSE AND THE COMMITMENT OF THE TUTORS, I HAVE LEFT AS AN ALL-ROUND PERFORMER. YOU DON'T JUST LEARN TECHNIQUE AT ESPA YOU LEARN CONFIDENCE, TO HAVE YOUR OWN STYLE AND WHAT IT TAKES TO GO FAR IN THIS COMPETITIVE INDUSTRY. I PUT ALL THOSE SKILLS TOGETHER IN MY SECOND YEAR AND GAINED PLACES AT MULTIPLE THEATRE SCHOOLS. I AM NOW CONTINUING WITH MY PROFESSIONAL TRAINING AT BIRD COLLEGE, WHERE I CONTINUE TO DEVELOP AND THRIVE IN EVERY AREA OF MUSICAL THEATRE.'

ZOE PARKES (LEVEL 3 MUSICAL THEATRE 2016-2018)

ual: university of the arts london

# LEVEL 3 EXTENDED DIPLOMA IN DANCE

The Level 3 Extended Diploma in Dance is a two-year programme consisting of sixteen units which allows you to progress onto a Degree level course, audition for dance schools or to provide you with skills to find employment. It provides students with the opportunity to explore, develop and test their creativity within a qualification structure which is stimulating, demanding and provides a supportive transition from general to more specialised study.

The course focuses on the vocational demands of Dance - giving every student a versatile training, alongside developing individuality and performance skills.

The Extended Diploma covers a wide variety of styles - essential for all dancers looking to progress into professional dance schools and employment. We offer professional working experience, providing opportunities to train in a diverse range of styles and gain performance experience in a variety of medias, such

as promotional events, music videos, live performances and film. The course aims to give students the experience of working in a professional environment with professional staff still working within the industry. Classes are taught in a practical and vocational context, with emphasis on developing technique, style and performance experience. ESPA provide a supportive environment that fosters not only artistic development but also intellectual and personal development within all its students.

The training is based around practical sessions in dance alongside performance space where skills are brought together. Students will also study the historical, stylistic and professional aspects of the industry. Students are assessed in core areas such as ballet, jazz, tap, contemporary and commercial along with exploring choreography skills and development of repertoire.

As part of the study programme at ESPA, all students are required to take an extra qualification alongside their Extended Diploma. Rather than taking a generic qualification, we feel it is more relevant to take an examination which will assist in a students chosen field. The Associated Board of Dance offers qualifications

which are OFQUAL registered and provide UCAS points from Grade 6 and above and enable students to take ballet grades as their extra qualification. Ballet classes are timetabled into the programme of study, these sessions will not only work on integral technique, but will enable students to follow a set syllabus of work as outlined by ABD. During the first term at ESPA, examination grades will be determined and students will work on this throughout the year, taking examinations in the second or third term. A second examination will be taken during the second year.

In the second year of the programme, students will continue developing core skills, preparing for auditions at dance colleges/universities along with again performing in the full school showcase. The final term at ESPA is preparation for the dance show, working as a company students put the skills learnt and developed into practice, developing crucial rehearsal skills and performing in a professional venue.

'I CONSIDER ESPA TO BE THE START OF MY JOURNEY, THE PLACE THAT SHOWED ME WHAT MY FUTURE COULD BE. I STARTED WITH LITTLE EXPERIENCE OF MUSICAL THEATRE, I WAS UNAWARE OF WHAT I COULD ACHIEVE BUT WITH THE LOVE AND GUIDANCE OF THE TUTORS I WAS ABLE TO TAKE STEPS FORWARD AND EXPLORE WHERE I WOULD FIT INTO THE INDUSTRY. YOU WILL LEARN HOW TO PUT YOUR SKILLS INTO PRACTISE IN GROUPS AND INDIVIDUALLY WHILST HAVING THE BEST TIME OF YOUR LIFE. THANKS TO ESPA I AM NOW CURRENTLY TRAINING AT ARTS EDUCATIONAL SCHOOLS, LONDON ON THE BA MUSICAL THEATRE COURSE, A SCHOOL I NEVER WOULD HAVE REACHED WITHOUT ESPA.'

WILL SILVER - LEVEL 3 MUSICAL THEATRE 2015-2017





# WHERE DO **ESPA** STUDENTS GO NEXT?

Previous students are now training or have trained in the following establishments:

ARTS EDUCATIONAL SCHOOL

MOUNTVIEW ACADEMY OF THEATRE ARTS

ROYAL CENTRAL SCHOOL OF SPEECH AND DRAMA

TRINITY LABAN CONSERVATOIRE OF MUSIC AND DANCE

ITALIA CONTI

BIRD COLLEGE

LONDON COLLEGE OF MUSIC

EMIL DALE

LIPA

OXFORD SCHOOL OF DRAMA

STELLA MANN

MIDLANDS ACADEMY OF  
DANCE AND DRAMA

LIVERPOOL THEATRE SCHOOL

SLP

ADDICT DANCE ACADEMY

THE ARDEN SCHOOL OF  
THEATRE

Along with Universities and colleges across a wide variety of courses, many students continue their training on the Higher Education programmes here at ESPA.

# APPLICATION PROCESS FOR LEVEL 3 COURSES

Complete an application form by visiting our website, all applications are taken through our partners at New College Stamford.

Experience days on offer between October and December  
(all details and booking available through our website)

## MUSICAL THEATRE

Participate in a Jazz Class  
Participate in a Singing/Acting Workshop

Prepare the Following: Musical Theatre Song  
(performed from memory with backing track)  
Monologue (performed from memory)

Each audition piece should be between 2  
and 4 minutes, and backing tracks should be  
brought in MP3 format (on either a phone,  
ipad etc)

## DANCE

Participate in a Jazz Class  
Participate in a Ballet Class  
Participate in a Commercial Class

Prepare a 2 minute solo dance that you feel  
highlights your best attributes as a dancer  
(Music should be brought in mp3 format on  
either a phone, ipad etc)

## ENTRY REQUIREMENTS

LEVEL 3 COURSES:

5 GCSE'S AT GRADES 9-4

SUCCESSFUL AUDITION AND INTERVIEW





HIGHER EDUCATION PROGRAMMES

# FOUNDATION YEAR TRAINING

The Foundation in Musical Theatre is a one year programme designed to develop skills in preparation for auditions for further training and study.

Students learn through a balanced programme of core training in acting, singing and dance technique along with developing artistic and creative individuality.

The timetable for the course comprises core compulsory sessions (for example Jazz, Singing, Vocal Repertoire, Acting, Creative Project) with optional classes then selected to enable students to devise their own training programme. With 15 compulsory contact hours per week, this course also allows students to take additional classes alongside the course. ESPA offers a variety of additional classes, and top up packages are available to develop a 5 day a week schedule.

As part of the Foundation course, students will work towards their Level 4 Higher National Certificate in Performing Arts (General Pathway) allowing for an academic development alongside the practical training.

This enables students to access finance through Student Finance England.

Performance opportunities are provided throughout the year, including a showcase and a full scale musical. All classes are taught by industry professionals who are highly experienced in their specialist field. A variety of guest workshops from current industry professional will also be on offer throughout the course.

'I HAVE SEEN GREAT IMPROVEMENT SINCE STARTING THE FOUNDATION TRAINING COURSE IN SEPTEMBER. NOT ONLY IN MY OVERALL ABILITY AS A PERFORMER, BUT MY LIFE SKILLS AS A PERSON. AS A LEVEL 3 STUDENT, I THOUGHT MY ONLY WAY TO CONTINUE WAS BY GOING TO UNIVERSITY OR DRAMA SCHOOL. I KNEW THAT I WASN'T READY TO PURSUE THAT SORT OF EDUCATION. I ALSO WANTED TO STUDY IN AN ENVIRONMENT WITH SMALLER CLASSES, MORE ONE TO ONE AND IN DEPTH TEACHING. BY DOING THIS I HAVE BEEN ABLE TO ADVANCE MUCH MORE THAN I WOULD HAVE DONE IN A LARGE GROUP. I HAVE BEEN TAUGHT TO WORK PROFESSIONALLY AND TO THE BEST OF MY ABILITY. A HIGH PERCENTAGE OF MY CLASSES ARE PRACTICAL, WHICH IS WHAT I LOVE, BUT STILL LEARNING A GREAT DEAL FROM MY THEORETICAL LESSONS. I AM BEING TAUGHT BY EXPERIENCED INDUSTRY PROFESSIONAL WHO I TRUST, I STUDY WITH PEOPLE I LOVE TO BE AROUND AND IN A PLACE WHERE THE SKILLS I HAVE LEARNT WILL LAST FOREVER. WITHOUT THE INCREDIBLE TRAINING I RECEIVED AND THE PEOPLE AT ESPA, I WOULD NOT HAVE BEEN ACCEPTED ON TO THE BA (HONS) COURSE AT BIRD COLLEGE CONSERVATOIRE OF MUSICAL THEATRE AND DANCE.'

LUKE DUBERRY - FOUNDATION YEAR TRAINING/HIGHER NATIONAL CERTIFICATE 2018-2019

# HIGHER NATIONAL DIPLOMA IN MUSICAL THEATRE

The Higher National Diploma in Musical Theatre encompasses all aspects of Musical Theatre, giving every student an excellent grounding in Singing, Dancing and Acting, alongside developing individuality and performance skills. Working in a highly vocational setting, in a private theatre school setting allows students to really focus and commit to their craft.

Upon successful completion of this course, you can apply to a range of institutions to 'top up' to a full Degree. Acceptance onto these courses is at the discretion of the Institution offering the top up. You will also have the opportunity to apply to Theatre/ Dance Colleges for further professional training. Students completing this course will also be prepared to go out into the world of work - into local or regional theatres as performers, or to develop their own Performing Arts businesses, teaching either privately or

in schools and educational establishments. Students learn through a balanced programme of core training in acting, singing and dance technique along with developing artistic and creative individuality. The timetable for the course comprises of core compulsory sessions (for example Jazz, Singing, Vocal Repertoire, Acting, Creative project) with optional classes selected to

enable students to devise their own training programme. With 15 compulsory contact hours per week, this course also allows students to take additional classes alongside the course.

ESPA offers a variety of additional classes, and top up packages are available to develop a 5 day a week schedule. Higher Education students have their own study area, available specifically on non-taught days for additional independent study and rehearsal. Throughout the course ESPA students will also be offered guest workshops with industry professionals.

ESPA provide a supportive environment that fosters not only the artistic development but also intellectual and personal development within all its students. The training is based around practical sessions and performance experience, where the three skills are brought together. Students will also study the historical, stylistic and professional aspects of the industry culminating in a solid understanding of the performing world. You will have the opportunity to perform in both a showcase and full scale show during both the first and second year of the course along with some smaller community based and in house projects.



YOUR JOURNEY STARTS NOW...

# ADMISSIONS

Starts : 09 September, 2019

NCS UCAS Code: N33

Course Code: HCPERAP

UCAS Code: 1A69

Fees : £6500 per year

Uniform: £50 - £100.

Trips and visits: £100

# REQUIREMENTS

80 UCAS tariff points

- A Level 3 Extended Diploma with at least an MMP profile

- 3 A Levels at grade C or above

- An interview and audition

- Mature students who may not have formal qualifications are encouraged to apply for an interview where you will be considered in relation to your experience, enthusiasm and commitment

# APPLICATIONS

Apply through UCAS or direct to New College Stamford

\*Apply Now\*

Auditions will include a Jazz class and a Singing/Acting workshop.

Higher Education students are asked to bring an example of written work to their audition.

Candidates are to prepare a solo musical theatre song with backing track and a monologue of their choosing.

All candidates will participate in an interview with the course coordinator.





# HIGHER EDUCATION FEES AND FINANCE

## TUITION FEE LOAN

You can apply to Student Finance England for a loan to support the cost of your tuition fees. This is paid directly to Higher Education Centre Stamford and you won't have to pay a penny back until your annual income is over £25,725. Applications take at least six weeks to be processed, however, Student Finance England will do an initial assessment so you will have some money as close to the start of your course as possible.

## MAINTENANCE LOAN SUPPORT

Depending on your household income you can apply for a loan of up to £7,529 to help with your living costs whilst studying at University Centre Stamford and like the Tuition Fee Loan, you don't have to pay a penny back until your annual income is over £25,725. Maintenance Loan Support replaces Student Grants.

## DISABLED STUDENTS ALLOWANCE (DSA)

You can apply for DSA to cover some of the extra costs you have because of a disability, mental health problem or long term illness whilst studying your higher education qualification. You can get this allowance on top of your other student finance and you don't need to pay it back. How much you get depends on your individual needs - not your household income.

FOR MORE INFORMATION, VISIT THE NEW COLLEGE STAMFORD WEBSITE OR CONTACT THE CENTRE'S FINANCIAL SUPPORT TEAM ON  
01780 484300 EXT. 344  
OR EMAIL  
FINANCIAL.SUPPORT@STAMFORD.AC.UK





EASTERSCHOOL.CO.UK



EASTERN SCHOOL OF PERFORMING ARTS



New College Stamford  
ACHIEVE EXCELLENCE, BE OUTSTANDING